



NETAJI SUBHAS MEDICAL COLLEGE AND HOSPITAL

 **ADITYAPUR, JAMSHEDPUR**

Experience the best medical services that
prioritize your health and well-being

CONTACT US

 18008898518 / 9386467618

 www.nsmch.ac.in

A Unit Of Sitwanto Devi Mahila Kalayan Sansthan

 **Provisional Registration No. - 2036900363**



Provisional Registration No. - 2036900363



Netaji Subhas Medical College & Hospital is established by Sitwanto Devi Mahila Kalyan Sansthan Spread over 12.38 Acre of Land at Plot Number-IC-6, Near to Adityapur Auto Cluster, Jamshedpur. The Institute is the brainchild of our visionary Chairman, Shri M.M Singh. Chairman's idea behind establishment of Netaji Subhas Medical College & Hospital is to provide best in class Medical Education to the Students and nurture world class Doctors for the service to the Nation.



The medical college is about Permitted by National Medical Commission (NMC), New Delhi (A Proposed Medical College) for its MBBS Course with an Intake of 150 Seats in Session 2025-2026.

The Medical College is equipped with state of the art infrastructure for teaching and learning. The Medical college has well established laboratories to support the teaching and hands on learning of the students. The support infrastructure i.e. Hostels for Students, residential quarters for Doctors and Staff, Sporting Facilities, Recreational Facilities are also available in college campus. Since inception vision of the institutes has been to provide world class medical facilities to the patients for clinical and diagnostic support. The institute has well established and strong Pre Clinical, Para Clinical and Clinical departments with qualified doctors, trained nursing & paramedical staff.

The Medical College will serve as a rostrum for the students to nurture their talent and engrave their ideas with creative best.

THE TEACHING HOSPITAL

The Teaching hospital of Netaji Subhas Medical College & Hospital is operational with 579 Beds in ward, 71 Beds in Intensive Care Unit (ICU, ICCU, PICU, NICU, SICU), 24 Hour Emergency & Ambulance Services equipped with all trauma and critical care support, Advanced Diagnostics Services, Radiology Services (CT Scan with 16 Slice Machine, Ultra Sound, X-Ray etc.), Cardiology Services (ECG, TMT & ECHO etc.) and also houses 8 Modular OT, Blood Bank (Component Separation facility), Labour Room, CSSD and Virology Lab (RTPCR) with all necessary infrastructure. The institute also runs super specialty clinics of Neurology, Neuro Surgery, Urology, Nephrology for the patients.

The hospital is an epicenter for health care services for millions of patients in its catchment area. The hospital is proud to have trust of the society for providing quality medical care to the patients coming from nearby areas in a radius of 100 kms.



CHAIRMAN'S MESSAGE



It is a decisive moment in the memories of our Journey that the Netaji Subhas Group of Institutions instigates a range of multidimensional courses under the umbrella of Sitwanto Devi Mahila Kalyan Sansthan which fortifies the testimony of our commitment to the society, state and the nation.

We persistently work towards to achieve the goal through state-of-the-art infrastructure & inspiring establishments and devoted team of faculty members and administrators. The enthusiastic learning ambience at our constituting institutions motivate and support our students to enhance their capabilities for achieving the all-round growth and academic excellence.

We endeavor to maintain high standards to health care & education to equip the youth of the nation to achieve the goals of the great visionaries of the country. The journey from casual observer to professional may appear difficult, however it can be very rewarding. The highly experienced faculty members drawn from various leading institutes of the country along with highly motivated, dynamic & innovating members together with the advanced equipment's in the laboratories are the strength of the institute. We constantly recognize the abilities and potentials of our students, which enable us to groom the qualities of our students which eventually help them to evolve themselves as successful professionals. Our focus remains on evolving stratum of efficiency, confidence and knowledge in our students with global exposure and futuristic mind-set that would contribute to the nation building with simultaneous faith in corporate ethics.

The journey towards the future would require sacrifice, courage as we force together further. The medical college has great potential and its doors are open to all who believe that quality health care & education can make a difference in services to the mankind and services to the most challenged. I take this opportunity to welcome the budding & service oriented young minds to grab all the possible opportunities available at Netaji Subhas Medical College & Hospital Adityapur, Jamshedpur. I wish a great success to all the prospective students of the Netaji Subhas Medical College & Hospital.



MR. M.M. SINGH 

CHANCELLOR, NETAJI SUBHAS UNIVERSITY, JAMSHEDPUR

CHAIRMAN

NETAJI SUBHAS MEDICAL COLLEGE & HOSPITAL BIHTA, PATNA

NETAJI SUBHAS MEDICAL COLLEGE & HOSPITAL ADITYAPUR, JAMSHEDPUR

FOUNDER SECRETARY

NETAJI SUBHAS INSTITUTE OF TECHNOLOGY BIHTA, PATNA

NETAJI SUBHAS INSTITUTE OF POLYTECHNIC BIHTA, PATNA

NETAJI SUBHAS PUBLIC SCHOOL, JAMSHEDPUR

NETAJI SUBHAS INSTITUTE OF BUSINESS MANAGEMENT, JAMSHEDPUR

NETAJI SUBHAS INSTITUTE OF EDUCATION, JAMSHEDPUR

NETAJI SUBHAS INSTITUTE OF HOTEL MANAGEMENT, JAMSHEDPUR



STATE-OF-THE-ART **INFRASTRUCTURE**

THE DIAGNOSTICS

Diagnostics services play a major role in effective treatment of patients. Netaji Subhas Medical College And Hospital Adityapur, Jamshedpur has developed a world class diagnostics services and is equipped with advanced Equipment's. The diagnostics services are run by a team of expert pathologists, microbiologists, biochemists and radiologists. They are well supported by team of trained technicians. The diagnostics services offer a wide range of tests in Radiology and Laboratory Diagnostics.

OUR CENTRAL CLINICAL LABORATORY

Laboratory facility / Diagnostics services for various investigations under Pathology, Biochemistry, Microbiology are equipped with HORIBA H500 Cell Counter, AGAPPE CXL Pro, VITROS 250 Biochemistry Analyzer, VITROS ECiQ Immuno Diagnostics System, Electrolytes Analyzer, Auto-Analyzer, Histopathology diagnosis, Culture & Sensitivity, Hormonal assays etc. The facility is run on 24x7 basis under supervision of experts

CLINICAL PATHOLOGY . HEMATOLOGY, HISTOPATHOLOGY . BIOCHEMISTRY . IMMUNOLOGY . MICROBIOLOGY . SEROLOGY, CYTOLOGY, MYCOLOGY, VIROLOGY BACTERIOLOGY, MICRO BACTERIOLOGY, PARASITOLOGY . IMMUNOHISTOCHEMISTRY



THE RADIOLOGY SERVICES

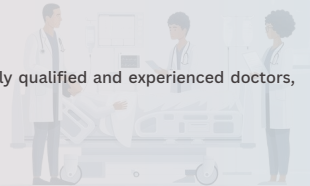
The department of Radio Diagnosis and Imaging is very well equipped and is one of the best centers of the Institute. The department incorporating the newer ideas and most up-to-date features. The Radiology services is equipped with CT-Scan (16 Slice Machine), Advanced UltraSound & Multiple X-Ray Machines. The Radiology Services will be equipped with MRI Machine in near future.



THE INTENSIVE CARE UNIT



- 71 Beds in Intensive Care Unit (ICU, ICCU, PICU, NICU, SICU) under the charge of highly qualified and experienced doctors, staffs and nurses.
- Ultramodern ventilators and multi parameter monitors with central monitoring system
- Fully equipped Central Laboratory Facilities in the premises of ICU
- Arterial Blood Gas Analyzer etc.



THE OPERATION THEATER COMPLEX



The Operation Theater Complex at Netaji Subhas Medical College and Hospital has 8 Modular Operation Theaters and 4 Minor Operation Theaters. The Operation Theaters is equipped with all modern infrastructure and equipment's. The OT ergonomically designed with all the aesthetics in place. Students can also access the OT Area for training.



THE FACULTY

The college has a team of dedicated and highly qualified faculty in all specialties with a vast teaching experience.

The faculty is involved in continuous, relevant and innovative research programmes. They are also invited as guest speakers at many well known institutions in the country.

Senior members of the teaching staff are invited as paper setters, examiners and moderators by various universities all over India.

The college encourages its faculty to attend workshops, seminars, conferences, symposia, etc. frequently.

TEAM OF 250+

EXPERIENCED AND WELL TRAINED DOCTORS



OUR VISION

To establish a Medicare & Medical Education facility to meet the growing medical need of the nation.

OUR MISSION

To offer advanced medical care to the underprivileged of the society along with offering scope for medical research benefitting the human kind at large.



OUR OBJECTIVES

- Establish institutions for learning and research
- Develop evaluation methods that raise students objectives
- Raise academic standards in the constituent units of Sitwanto Devi Mahila Kalyan Sansthan
- Bring about capacity development of teachers
- Encourage both teachers and students to undertake research
- Enter into collaboration with higher educational institutions
- Undertake extension activities for the development of the community
- Develop and enter into collaborative programmes with Indian and foreign Universities and other academic institutions, scientific organizations and other agencies
- Carry out instructions and training, distinguishable from programmes of ordinary nature, for making distinctive contributions in the areas of specializations
- Provide for special training or coaching for competitive examinations, for recruitment to the Public Services, Public Undertakings and other competitive employment opportunities
- Develop students personalities as informed and objective critics, identify and cultivate their talents, train right kind of leadership, develop right kind of attitudes, interests and values



THE MEDICAL COLLEGE

The Medical College of Netaji Subhas Medical College and Hospital is designed with students in the forefront. The infrastructure and the facilities is crafted with best in class teaching methodology to support the teaching and learning process. The medical college is equipped with state of art laboratories in Anatomy Department, Bio-Chemistry Department, Physiology Department and Community Medicine Department. The department of Anatomy and Community Medicine have well developed museum for training. The anatomy department has a versatile Dissection Hall for students and is equipped with state of art equipment's.

The Medical College has ergonomically designed AC-Classroom equipped with audio visual support and smart boards. The Central Library boasts a vast collection of books and journals and there is a good collection of books at the Departmental Library as well. There is a dedicated and separate Common Rooms for Boys and Girls with all amenities and recreational facilities.



It is well said that **“Man Behind the Machine is More Important”** thus at Netaji Subhas Medical College & Hospital we have a pool of Educators and Mentors to nurture the young brain of budding Doctors.

THE INFRASTRUCTURE



CLASSROOM

The Classroom at Netaji Subhas Medical College & Hospital is esthetically designed to aid learning. The Classroom is equipped with Smartboards and cutting Edge Audio Video System. The Classrooms are centrally air-conditioned to keep students comfortable while learning.

LABORATORIES

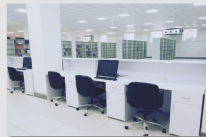
The laboratories are established as per the requirement of National Medical Commission (NMC) in Department of Anatomy, Bio-Chemistry, Physiology and Community Medicine for 1st Year Students. The labs are spacious well equipped and have all the instruments to support teaching and learning process.

MUSEUM

"Pictures Speak Louder Than Words" with this in background the Institute has developed museum in Anatomy & Community Medicine. The museum is stacked with samples and demonstration units to give hands-on training to students. The Museums are updated regularly as per the requirement of the curriculum.

LIBRARY

The college has an excellent central library facility stocked with textbooks, reference materials, and periodicals covering all disciplines of medicine and healthcare. It has a total floor area about 4000 sq. feet, with a provision of a separate reading room for the teaching staffs and a spacious Digital Library section equipped with computers, high-speed internet, and access to electronic journals, e-books, and medical databases. The Library subscribes to most of the National and International Journals required for the undergraduate.



NETAJI SUBHAS MEDICAL COLLEGE AND HOSPITAL SERVICES

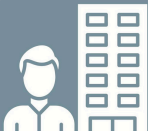
OUR MEDICAL CENTER IS EQUIPPED WITH ADVANCED TECHNOLOGY TO
ENSURE ACCURATE DIAGNOSES AND EFFECTIVE TREATMENTS

CLINICAL SERVICES

- ✓ Pathology
- ✓ Microbiology
- ✓ Pediatrics
- ✓ General Medicine
- ✓ Community Medicine
- ✓ Psychiatric Treatment
- ✓ Dermatology
- ✓ General Surgery
- ✓ Orthopedics
- ✓ Obstetrics And Gynecology
- ✓ Cardiology
- ✓ Urology
- ✓ Otorhinolaryngology (ENT)
- ✓ Radiation Diagnosis
- ✓ Ophthalmology
- ✓ Anesthesiology
- ✓ Dental Care

- ✓ OPD
- ✓ IPD
- ✓ Emergency
- ✓ Diagnostic Services
- ✓ Dialysis
- ✓ Blood Bank
- ✓ Ambulance





HOSTEL FACILITIES

In students life Hostel is second home and we completely understand this. The hostels at Netaji Subhas Medical College are developed and designed keeping the comfort and safety of students in mind. Hostels are equipped with all comforts and amenities. The hostels are airconditioned.



SPORTS FACILITIES & FITNESS CENTRE

"Healthy Mind Resides in a Healthy Body". This is a proven proverb and we at Netaji Subhas Medical College & Hospital compliment this by providing great sporting facilities. The institute has a lavish playground with support to outdoor games and a great setup for Indoor Facilities. Our college has a well stocked Gym and swimming pool.



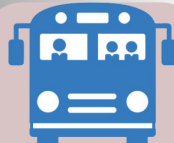
CAFETERIA AND MESS FACILITIES

The Institute has a well established Cafeteria and Mess. The cafeteria is a creative outpost for the students where they discuss their illuminations over a cup of coffee. Rest apart to feed the empty stomach. There is ergonomically designed mess where home made food is served to the students. The cafeteria and mess is run by the team of experts.



RECREATIONAL FACILITIES

Creative Learning is essentially important for Innovations. Apart from Academics it's very important to foster creativity. We at Netaji Subhas Medical College & Hospital are crafting Creative & Cultural Centre for the Students, to explore their unexplored thoughts and innovate with their creative cult.



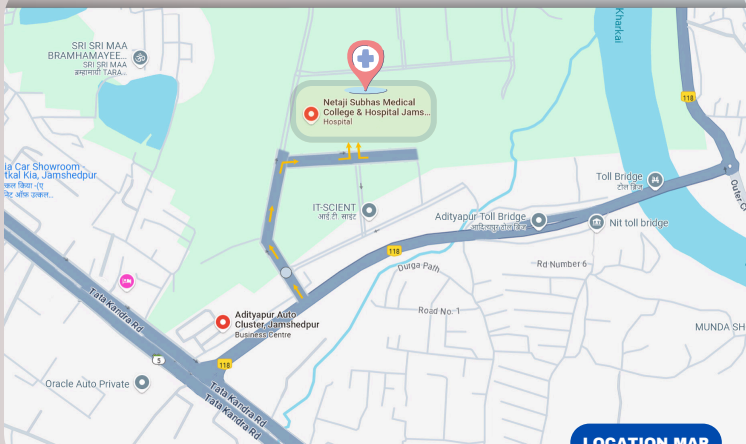
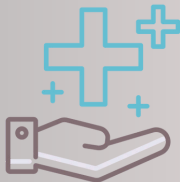
TRANSPORTATION FACILITY & ADD-ONS

A fleet of busses operates from Patna for staff and students along with 24X7 in campus ATM service, shopping centre, laundry services etc.



NETAJI SUBHAS MEDICAL COLLEGE AND HOSPITAL

ADITYAPUR, JAMSHEDPUR



📍 Near Adityapur Auto Cluster, Jamshedpur, Jharkhand 832109

☎ 18008898518 📞 7479628194 📞 9386467618

✉ info@nsmch.ac.in 🌐 www.nsmch.ac.in

